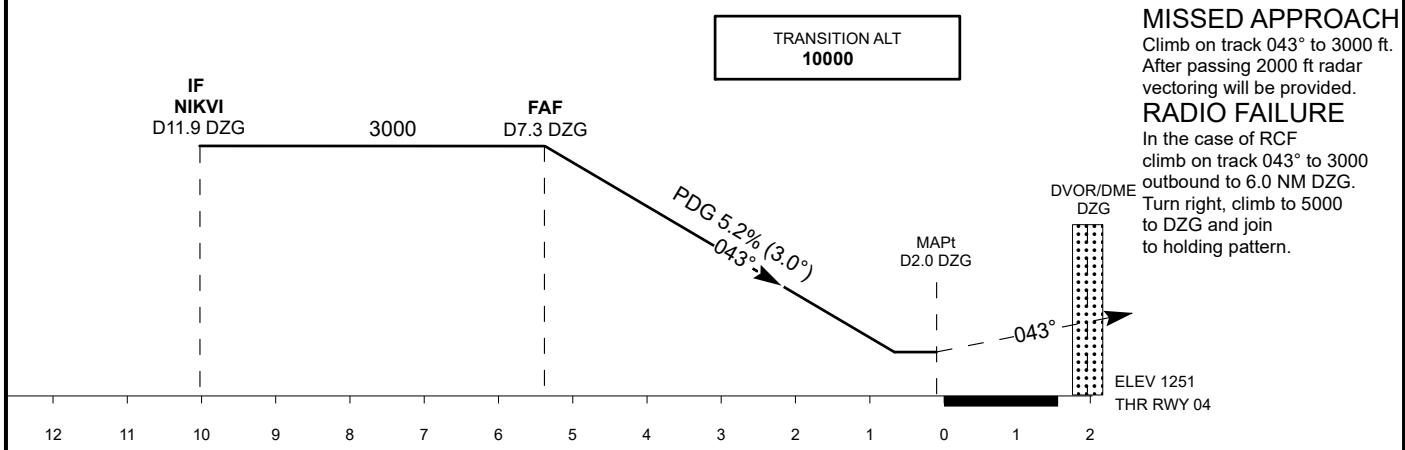
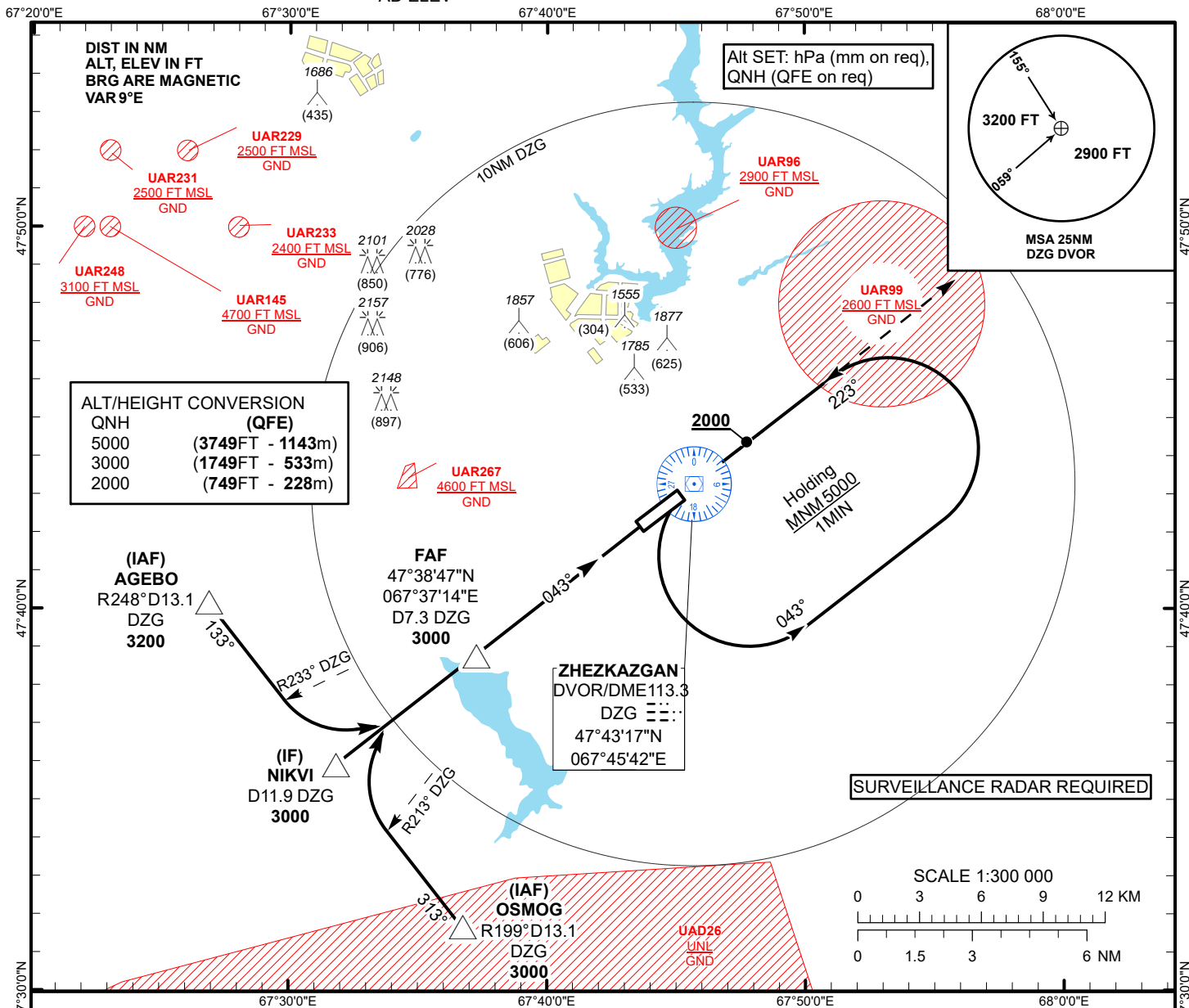


INSTRUMENT
APPROACH
CHART - ICAO

AERODROME ELEV 1251FT
HEIGHTS RELATED TO
AD ELEV

ZHEZKAZGAN TOWER 127.1
ZHEZKAZGAN ATIS (EN) 131.4
ZHEZKAZGAN ATIS (RU) 122.4

ZHEZKAZGAN
VOR/DME Y
RWY 04



Aircraft Category		A	B	C	D	DIST THR	5.4	5	4	3	2	1	
Straight-in Approach OCA/H						DME DZG	7.3	6.9	5.9	4.9	3.9	2.9	
	VOR/DME	1530(280)	1530(280)	1530(280)	1530(280)	ALTITUDE	3000	2892	2574	2255	1937	1618	
						HEIGHT	1749	1641	1323	1004	686	367	
Aerodrome Operating Minima MDH ft x RVR(CMV)	VOR/DME												
						GS	Kt	80	100	120	140	160	180
						FAF-MAPt 5.3NM	min:sec	3:59	3:11	2:39	2:16	1:59	1:46
						Rate of descent (5.2%)	ft/min	420	530	640	740	850	960

ZHEZKAZGAN
VOR/DME Y

AERONAUTICAL DATA TABULATION

VOR approach to RWY04 from AGEBO, NIKVI, OSMOG	
Fix/point	Coordinates
DVOR/DME DZG	47° 43' 17.1"N 067° 45' 41.7"E
(FAF) D7.3 DZG	47° 38' 46.7"N 067° 37' 14.0"E
NIKVI (IF) D11.9 DZG	47° 35' 55.2"N 067° 31' 47.9"E
AGEBO (IAF) R248°, D13.1 DZG	47° 40' 09.8"N 067° 26' 51.9"E
OSMOG (IAF) R199°, D13.1 DZG	47° 31' 40.3"N 067° 36' 43.2"E
THR RWY04	47° 42' 06.51"N 067° 43' 29.14"E
Final approach descent angle is 3°	